

VIBRATION**SOLUTIONS**

3 MISCELLANEOUS
PRODUCTS

2024
VIBCO
60
YEARS

VIBCO®
VIBRATORS

SOLVING MATERIAL FLOW & COMPACTION SINCE 1962

VIBRATION EQUIPMENT ON THE JOB APPLICATIONS



Above: Experience the unbeatable power of the Series SVRWS-5500 (page 58-59) railroad car shaker in action, efficiently tackling the toughest jobs.

Right: The VIBCO Air Cannon (page 68-69), shown in the white circle, ensures a seamless and consistent conveyor flow, maximizing operational efficiency.

Below Right: Enhance the strength of your concrete slabs with the help of a vibrating compaction table (pages 70-71), effectively eliminating air pockets for unmatched durability. Shown is a precast form on a custom grid top table.

Below: Explore VIBCO's extensive range of rollers and compactors (pages 72-73) designed for long-lasting pothole repair, as well as soil and asphalt compaction solutions that stand the test of time.



OTHER VIBRATION PRODUCTS

SECTION

PORTABLE LUG TYPE.....pages 56-57



- ▶ **USL-900/USL-1600 Series** Use with LC-2 Lug Bracket
- ▶ **SVRL-5500,-6500,-8000** Use with LC-1 Lug Bracket
- ▶ **SVRLS-5500,-6500,-8000** Use with LC-1 Lug Bracket
- ▶ **HL-3000** Use with LC-1 Lug Bracket
- ▶ **2PL-900** Use with LC-2 Lug Bracket
- ▶ **CCL-5000** Use with LC-1 Lug Bracket
- ▶ **SVRLS-4000** Use with LC-2 Lug Bracket

RAILROAD CARSHAKERS.....pages 58-60



- ▶ **RB-6500 Series** Latest in Railroad Technology
- ▶ **CCW-5000** The Silent Car Shaker
- ▶ **SVRWS-5500,-6500** Most Powerful
- ▶ **SVRWS-4000** With Stik-It™ Mount
- ▶ **VMW Electric** With Wedge Bracket
- ▶ **VMC Electric** With Clamp Bracket
- ▶ **PC-3500 Big Buster**
- ▶ **44-3 Pneumatic Piston**

STIK-IT™ VACUUM MOUNT.....pages 61-63



- ▶ **STKIT 902, 903, 906, 908** Vibrator Mounts for most VIBCO units:
- ▶ **TRAILA™** The Traila™ unit is designed to save weight and make unloading your truck and tender hoppers simple and effective.
- ▶ **STIK-IT MAX™** The STIK-IT MAX™ unit is designed to save weight and make unloading your tender hoppers effective, while operating in extreme conditions.

MOUNTING BRACKETS / CONTROL BOXES.....pages 64-67



- ▶ Over 750 mounting brackets available
- ▶ Pipe Brackets, Railroad car style brackets, wall systems, more
- ▶ Fool-Proof engineered mounting systems save time, money and effort!

AIR CANNONS.....pages 68-69



- ▶ **ABS-4-10EV Series** 52-1/2" Tall
- ▶ **ABS-4-5EV Series** 48" Tall
- ▶ **ABS-4-4EV Series** 36" Tall
- ▶ **ABS-4-2EV Series** 32" Tall
- ▶ **ABS-2-2EV Series** 24" Tall
- ▶ **ABS-2EV Series** 15" Tall
- ▶ **ABS-1-1/2 Series** 28-5/8" Tall
- ▶ **ABS-1 Series** 5-9/16" Tall

VIBRATION TABLES.....pages 70-71



- ▶ **Test Tables** VIBCO will build a Vibrating Table solution to meet your needs. Our affordable, effective and durable vibration tables suit any industrial or construction application like settling material for shipping & consolidating concrete. We have the shortest vibrating table lead times on the market!
- ▶ **Grid Top Tables**
- ▶ **Compaction Tables**
- ▶ **Flat Platform Tables**
- ▶ **Low Profile Packers**

CONSTRUCTION DIVISION.....pages 72-73



- ▶ **Internal Concrete** Ideal for O.E.M. equipment
- ▶ **Plate Compactors** For Asphalt and Soil
- ▶ **Rollers** Also for Asphalt and Soil

ACCESSORIES/MUFFLERS/CONTROL BOXES.....pages 74-75

SELECTION DATA.....pages 76-81

VIBCO PORTABLE LUG-TYPE ELECTRIC, PNEUMATIC, HYDRAULIC

SVRL & SVRLS
-5500, -6500, -8000
(Pneumatic, uses LC-1)

CCL-5000
(Pneumatic,
uses LC-1)

HL-3000
(Hydraulic,
uses LC-1)

7-1/4"
184mm

**LC-1
LUG BRACKET**

Technical Data

Electric Models	Weight		Power	1 Phase	3 Phases		Power	Centrifugal Force - lbs./N Adjustable						Sound*	Vib. /min.
				Amperes at Volt**				Min.		Norm		Max.			
	lbs.	kg.	Phase	115/230	230/460	575	h.p	lbs.	Newtons	lbs.	Newtons	lbs.	Newtons	dB	VPM
2PL-900	30	13.6	1 & 3	3/1.5	1/0.5	0.4	1/3	15	665	300	1,335	450	2,000	62	3,600
2PL-1600	48	21.8	1 & 3	5/2.5	1.2/0.6	0.5	1/2	110	490	450	2,000	900	4,005	64	3,600
USL-900	18	8.2	1	4.5/2.3	—	—	—	600	2,670	900	4,005	1100	4,895	85	10,000
USL-1600	20	9.1	1	5.0/2.5	—	—	—	1,100	4,895	1,600	7,120	1800	8,010	85	9,000
* Decibel from A scale at 1 meter								NOTE: • Data obtained on laboratory test block • Data subject to design changes							
** Most vibrators available in both 50 & 60 Cycles, 115 to 575 volt								• Frequency & force will decrease on less rigid mount.							

Pneumatic Models	Weight		80 PSI (5.5 Bar)			90 PSI (6.2 Bar)			100 PSI (6.9 Bar)			Cubic ft. per min.	Sound
			Vibration per min.	Centrifugal Force		Vibration per min.	Centrifugal Force		Vibration per min.	Centrifugal Force			
	lbs.	kg.	VPM	lbs.	Newtons	VPM	lbs.	Newtons	VPM	lbs.	Newtons	CFM	dB
SVRLS-4000	22	10.4	11,500	3,600	16,000	12,500	4,000	17,800	13,500	4,400	19,500	40	78
SVRLS-5500	43	19.5	9,000	4,950	22,000	10,000	5,500	24,500	10,500	6,100	27,100	56	82
SVRLS-6500	45	20.4	8,800	5,575	24,800	9,500	6,500	28,900	10,000	7,200	32,000	58	80
SVRLS-8000	47	21.3	8,500	7,625	33,900	8,700	8,000	35,600	9,500	9,550	42,500	62	82
SVRL-5500	37	16.8	9,000	4,950	22,000	10,000	5,500	24,500	10,500	6,100	27,100	56	98
SVRL-6500	39	17.8	8,800	5,575	24,800	9,500	6,500	28,900	10,000	7,200	32,000	60	98
SVRL-8000	41	18.6	8,500	7,625	33,900	8,700	8,000	35,600	9,500	9,550	42,500	63	98

See page 30-31 for more information

Pneumatic Models	Weight		60 PSI (5.5 Bar)				80 PSI (5.5 Bar)				Sound
			Vibration per min.	Cubic ft. per min.		Centrifugal Force	Vibration per min.	Cubic ft. per min.		Centrifugal Force	
	lbs.	kg.	VPM	CFM Air	lbs.	Newtons	VPM	CFM Air	lbs.	Newtons	dB
CCL-2000	23	10.5	4,000	30	890	3,960	6,000	40	2,000	8,895	78
CCL-5000	48	21.8	4,000	35	2,220	9,875	6,000	50	5,000	22,240	75
CCL-7000	48	21.8	5,000	40	3,380	15,035	7,200	50	7,000	31,135	78

See page 12-13 for more information

Hydraulic Model	Weight		Avg. PSI (max 3000 PSI)	Vibration per Min.	Gallons per Min.	Force		Sound
	lbs.	kg.		VPM	GPM (max.)	lbs.	Newtons	
HL-3000	39	17.7	1,000	5,000	3.2	3,400	15,125	76

See page 34-35 for more information

MODELS 2PL, SVRL, CC FIT BRACKETS LC-1 OR LC-2

2PL-900
(Electric, uses LC-2)
2PL-1600
(Electric, uses LC-1)



USL-900
USL-1600
(Electric, uses LC-2)



SVRLS-4000
(Pneumatic, uses LC-2)



**LC-2
LUG BRACKET**

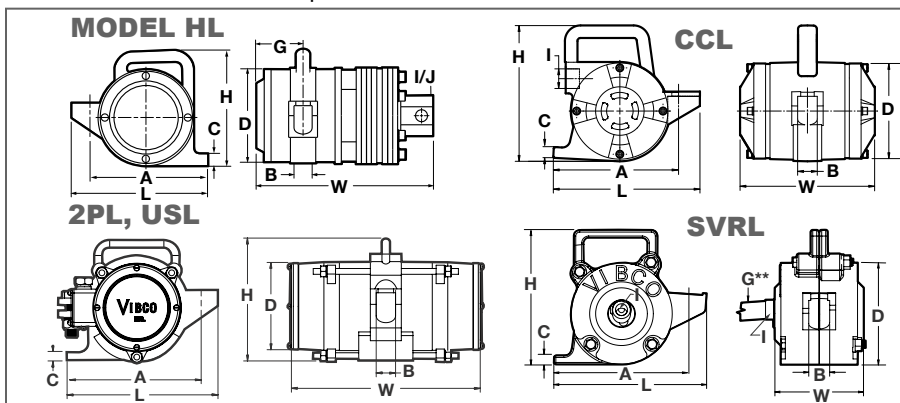


LUG TYPE

Unlock the potential of your LC-1 or LC-2 lug brackets with VIBCO's lug-type portable vibrator. Experience 100% vibration transfer, making it an easy and cost-effective solution for various applications. From bin to bin, tote box to tote box, or concrete form to concrete form, this portable vibrator does it all! Experience the

power of choice: electric, pneumatic, or hydraulic operation, allowing you to tailor the vibrator to your specific needs. Experience the efficiency and reliability of VIBCO vibrators in action!

Right: A wall of VIBCO SVR High Frequency Vibrators hang on wall form with low slump concrete being poured.



Dimensions

Model	L		W		H		A		B*		C x F†		D		G**		Inlet I NPT / SAE	Bracket
	in.	mm	in.	mm	in.	mm	in.	mm	in.	mm	in.	mm	in.	mm	in.	mm		
2PL-900	7	178	12	305	7	178	5-1/2	140	1	25	1/2 x 1-1/4	13 x 32	5-1/2	140	—	—	—	LC-2
2PL-1600	9-1/2	241	11-5/8	295	8-7/8	225	6-5/8	168	1	25	3/4 x 1-1/4	19 x 32	6-3/4	171	—	—	—	LC-1
USL-900	7-1/2	190	11	279	7-1/4	184	4-3/4	121	3/4	19	1/2 x 1-1/4	13 x 32	4-3/4	121	—	—	—	LC-2
USL-1600	7-7/8	200	11	279	7-1/4	184	4-3/4	121	3/4	19	1/2 x 1-1/4	13 x 32	4-3/4	121	—	—	—	LC-2
SVRLS-4000	7	178	8	203	7-1/2	190	6	152	3/4	19	1/2 x 1-1/4	13 x 32	5	127	3/4	19	5/8-18 SAE	LC-2
SVRLS-5500, 6500 & 8000	9-1/2	241	8-1/16	205	9-1/4	235	7-3/4	197	1	25	3/4 x 1-1/4	19 x 32	6-3/8	162	3/4	19	5/8-18 SAE	LC-1
SVRL-5500, 6500 & 8000	9-1/2	241	6-1/8	156	9-1/4	235	8	203	1	25	3/4 x 1-1/4	19 x 32	6-1/2	165	3/4	19	5/8-18 SAE	LC-1
CCL-2000	7	178	8-1/16	205	7-1/4	184	6	152	3/4	19	3/8 x 1-1/4	10 x 32	5-1/16	129	—	—	3/4 NPT	LC-2
CCL-5000,7000	9-3/8	238	8-5/8	219	8-5/8	219	8	203	1	25	3/4 x 1-1/4	19 x 32	6-1/16	154	—	—	1 NPT	LC-1
HL-3000	9-1/2	241	11-1/4	286	9-1/4	235	7-3/4	197	1	25	3/4 x 1-1/4	19 x 32	6-1/4	159	3-1/8	79	3/4-16 SAE (inlet & outlet)	LC-1

* Max. mounting bolt diameter

† C= Foot Height, F=Foot width

** Hose diameter for SVR units (3/4" hose with 5/8-18 SAE threads supplied by VIBCO)

NOTE: • Material, Dimensions & Data subject to change without notice
• Dimensions ±1/16"

VIBCO'S RAILROAD CARSHAKERS BRACKETS AVAILABLE

WEDGE TYPE MODELS



MOST POPULAR PNEUMATIC SVRWS-5500, SVRWS-6500 (see page 30-31)

Our High-Frequency railcar shakers, SVRWS-5500 and SVRWS-6500, are engineered for ultimate performance with moisture-rich materials. They effortlessly tackle even the most challenging loads. Revolutionary Patented Wear-Plates: Slash Maintenance Costs by 75%!

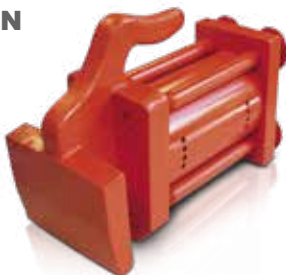


SILENT Pneumatic CCW-5000 (see page 12-13)

With noise levels as low as 70-75 dB, equivalent to an electric motor, the CCW-5000 utilizes our patented turbine gear, delivering an impressive force of up to 5000 lbs. Experience hassle-free operation with its Quick-Disconnect hose fitting and secure hold down bracket. Check out pages 12-13 for more details!"

PNEUMATIC MODEL 44-3 & 44-3L PISTON (see page 28-29)

44-3 available in powerful 3" bore or the 44-3L (long stroke). Both help evacuate hopper cars quickly. The convenient weight (lighter than competitors), ease of portability, and high forces of VIBCO's Model 44 has proven highly desirable.



ELECTRIC MODEL VMW ON WEDGE BRACKET (see page 58-59)

Unmatched performance with the VIBCO Model VMW, a powerhouse comprising a 2P or 4P Vibrator accompanied by a robust Wedge style bracket. These heavy-duty electric vibrators come in two variants: the Model 2P, operating at an impressive 3600 RPM, and the Model 4P, providing a steady 1800 RPM. All models have overload protection and adjustable eccentrics providing flexibility to meet changes in material content or density.



HYDRAULIC MODEL HLF-3500 WEDGE BRACKET (see pg 48-50)

The 'Big Buster' delivers a remarkable 3500 lbs. of force at a low frequency of 4000 Vibrations per Minute (VPM) and 9000 RPM. Its hydraulic/pneumatic operation offers a wide range of applications, providing superior force and adaptability in various industrial settings.

CLAMP-ON MODELS

PNEUMATIC MODEL PC-3500 BIG BUSTER (see page 34-35)

Introducing "Big Buster" Carshakers - the perfect solution for handling coarse materials with ease! Whether you opt for the Pneumatic or Hydraulic models, you can rely on their impressive high force at low frequency. At the heart of "Big Buster" Carshakers lies VIBCO's innovation - patented vibration isolation couplings. These couplings prevent vibrations from reaching the drive motor. As a result, you can rest assured that your drive motor will have a long and productive life.



ELECTRIC MODEL VMC ON CLAMP BRACKET (see page 58-59)

Powerful and Versatile: Introducing the 2P-1700 and 2P-2500 with Clamp-On Brackets. These cutting-edge three-phase units come equipped with overload protection and adjustable eccentrics, allowing seamless adaptation to varying material content and density.



PNEUMATIC LUG STYLE MODEL SVRL-5500 or SRL ON CLAMP BRACKET (see page 56-57)

Unleash Versatility with VIBCO's High-Frequency, High-Force Vibrators - Easily Mounted Anywhere! Whether it's portability, speed, or force adjustability you seek, these units outshine the competition with effortless air supply regulation. Say hello to unmatched versatility and performance in one exceptional package!



STIK-IT™ BRACKETS

PNEUMATIC SVRFS-4000AL with Stik-It™ Mount (see page 30-31, 61)

- Effortless Field Installation!
- Swift Setup, On-the-Go Portability!
- Secure Suction for Optimal Vibration Transfer.
- Target and Tackle Railroad Hopper Hang-ups with Precision.
- Perfect for Hassle-Free Hopper Cleaning too!



Ask for
Catalog 9126 Ask for FL-P-RB-32919

RAILROAD CARSHAKERS PNEUMATIC, ELECTRIC & HYDRAULIC

SPECIAL PRODUCTS

PNEUMATIC MODEL BVST-4400 WEDGE BRACKET (see page 8)

These have been the work horses for generations and are the most powerful of the Railroad Car-shakers. They will move the most stubborn materials.



PNEUMATIC

CCW-2500 HOB0 (see page 12-13)

Dispelling a Common Misconception: Free-flowing materials like grain or plastic pellets may seem easy to handle, but without vibration, corners in dead flow zones of railcars remain uncleared. Enter the Hobo Heavy Duty Pneumatic Turbine Vibrator, the ultimate solution for effectively cleaning out those hard-to-reach areas!

Boost Your Bottom Line: Picture this – unloading 2 railcars a week with a product costing 50 cents a pound. Leaving just 100 pounds in each hopper means a staggering loss of \$100 (2 cars x 100 lbs in each x \$.50). The Hobo's remarkable efficiency leads to a two-month **Return on Investment (ROI)**, making it an incredible addition to your operations.

Lightweight Powerhouse: Weighing in at just 24 lbs, the Hobo is the lightest weight railroad car shaker available. Its virtually silent operation keeps disruptions at bay. The HOB0's patented design eliminates the need for lubrication.



Shown with optional hold down bracket for securing wedge into female pocket

Unload Railroad Hopper Cars Faster, Cleaner with Less Labor . . . SIMPLE RULES FOR SELECTING YOUR CARSHAKER



MATERIAL IN RAILROAD CAR (for chart below)

GROUP 1	Cement, flour, carbon black, bone black, aluminum shot.
GROUP 2	"After" Vibration (for cleaning car) Cement, sugar, flour, chemical salts (no moisture), corn grits, arsenic, barley hops, carbon black, borax, fluoride, gypsum, sodic sulphate, peanuts, sodium nitrate, semolina, trisodium phosphate and similar materials.
GROUP 3	Salts, molasses, iron ore, malt (if sticky) potash, bauxite, calcium carbide, crushed marble, and similar materials.
GROUP 4	Sand, stone, asphalt, stone dust, fly-ash, salt, coal, clay-lime-lumps, and similar materials.

RAIL CAR

	CAR SHAKER MODEL	Consisting of		Electric* Power	Vibrator Weight Only		Material in Railroad Car (see chart above)	dB**
		Vibrator	Bracket†		lbs.	kg.		
ELECTRIC	VMC-450	2P-450***	Clamp-On	1 & 3 Phase	50	22.7	Group 1	70
	VMC-1000	4P-1000‡	Clamp-On	1 & 3 Phase	52	23.6	Group 1	70
	VMW-450	2P-450	Wedge	1 & 3 Phase	48	21.8	Group 1	70
	VMW-700, 1000	4P-700, 4P-1000	Wedge	1 & 3 Phase	50	22.7	Group 1	70
	VMC-800	2P-800	Clamp-On	1 & 3 Phase	85	35.6	Group 2	75
	VMW-800	2P-800	Wedge	1 & 3 Phase	75	34.0	Group 2	75
	VMC-1700	2P-1700	Clamp-On	3 Phase	90	40.8	Group 3	78
	VMC-2500	2P-2500	Clamp-On	3 Phase	98	44.5	Group 4	80
PNEUMATIC	Model	Vibrator	Bracket†	CFM/80 PSI	Vibrator Wt.		Material in Rail Car	dB**
	CCW-2500 (Hobo)	Pneumatic Turbine	Wedge	30	30	13.6	Group 1-2	72-75
	CCW-5000	Pneumatic Turbine	Wedge	35	48	21.8	Group 1-2	72-75
	44-3	3" Piston	Wedge	30	50	22.7	Group 1-2	93-95
	PFW-1500	PF-1500	Wedge	21	55	24.9	Group 1-2	80-85
	PFC-1500	PF-1500	Clamp-on	21	63	28.6	Group 1-2	80-85
	RB-5000-CCW	Pneumatic Turbine	Air Wedge	35	48	21.8	Group 1-2	72-75
	CCW-2500 (Hobo)	Pneumatic Turbine	Wedge	30	30	13.6	Group 2-3	72-75
	CCW-5000	Pneumatic Turbine	Wedge	50	48	21.8	Group 2-3	72-75
	PFW-1500	High Frequency	Wedge	50	48	21.8	Group 2-3	78-85
	44-3L	3" L-Piston	Wedge	50	60	27.2	Group 2-3	90-95
	BVST-4400	Pneumatic Turbine	Wedge	30	22	10.0	Group 2-3	92
	PC-3500	PC-3500	Clamp-on	39	71	32.2	Group 2-3	90-95
	RB-6500-SVR	SVRS-Silent High Freq.	Air Wedge	50	48	21.8	Group 3-4	78-85
	SVRFS-4000AL	SVRS-Silent High Freq.	Stik-It 906	40	23	10.4	Group 3-4	78-85
	SVRWS-5500 & 6500	SVRS-Silent High Freq.	Wedge	50	48	21.8	Group 3-4	78-85
	PC-3500	PC-3500	Clamp-on	39	71	32.2	Group 3-4	80-85
	SVRC-5500, 6500 & 8000	SVR High Frequency	Clamp-on	55	58	26.3	Group 3-4	93-90

See page 66 for bracket weights in lbs. shown in parenthesis.
* Use 1 Phase brackets for both 1 & 3 Phase Units.
** Decibel at 1 meter on A-scale
Material, Dimensions & Data subject to change without notice

*** 2P-450 for fine to granular materials
‡ 4P-1000 for lumpy or stringy materials
† When possible use wedge bracket over clamp-on for better vibration transfer
Caution: Always use stabilizing jacks on both sides of the car when using shakers.

VIBCO RAIL BOSS RAILROAD SHAKERS



- Patented
- Powerful
- Quiet
- Low Maintenance

RB-6500 - LATEST IN RAILROAD CARSHAKER TECHNOLOGY

With its cutting-edge inflatable air bag, the RB-6500 dominates vibration force transfer to your car, effortlessly tackling the toughest loads. From coarse sand, stone, and asphalt to powdery flour and cement, nothing can withstand the RB-6500's vibrations. Say goodbye to wasted time and effort – our powerful technology rapidly clears your railroad car, leaving it primed for the next load. Embrace efficiency, as the RB-6500 ensures your cargo is delivered in full, without a trace of waste left behind.

AS EASY AS 1, 2, 3

1. Easy in – just drop the RB-6500 unit into the dovetail bracket welded onto the hopper on the railroad car. The unit will fit easily with some play.
2. Activate the rubber air bag. The air pressure will wedge the specially designed male wedge bracket into the dovetail bracket.
3. Now start the vibrator – there will be **no loss** of vibration force – all will be directed into the hopper, – **no loss** of force due to a loose vibrator, and – **no wear or noise** due to a loose vibrator.

When the car is unloaded, simply turn off the air pressure to the vibrator to stop it. Deflate the air bag and the unit is now loose and can easily be lifted from the bracket - no hammering out needed!

RCP-BUGGY FOR RAILROAD SHAKERS

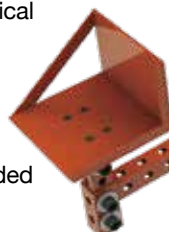
Introducing the Revolutionary RCP-Buggy by VIBCO - a game-changing solution designed to streamline the process of moving and installing your railroad car shaker. With its fully adjustable features, this innovative tool ensures both ease and safety during operations. The RCP-Buggy's convenient maneuverability makes it the perfect choice for transporting vibrators between railcars with utmost efficiency.

The basket that sits on the end of the RCP is specifically made to cradle your vibrator model. Please specify the unit you plan to use when ordering so the bucket can be customized to fit your unit. The RCP-buggy can easily be adjusted to the user's height as well as the weight of the unit and more.

Its ergonomic construction is designed to take the pressure off of lifting the unit into place and removing it, making it a real job site safety investment. It can be operated by a single worker, increasing productivity, without straining backs.

Hand injuries can also be reduced as hand lifting of the vibrator is eliminated. The RCP-Buggy is a lightweight and economical solution with substantial strength in moving heavy railcar shakers. It's a "Must Have" for every rail yard.

1. Adjust height and angle of basket to achieve best fit. Replace basket as needed to fit additional vibrator models.



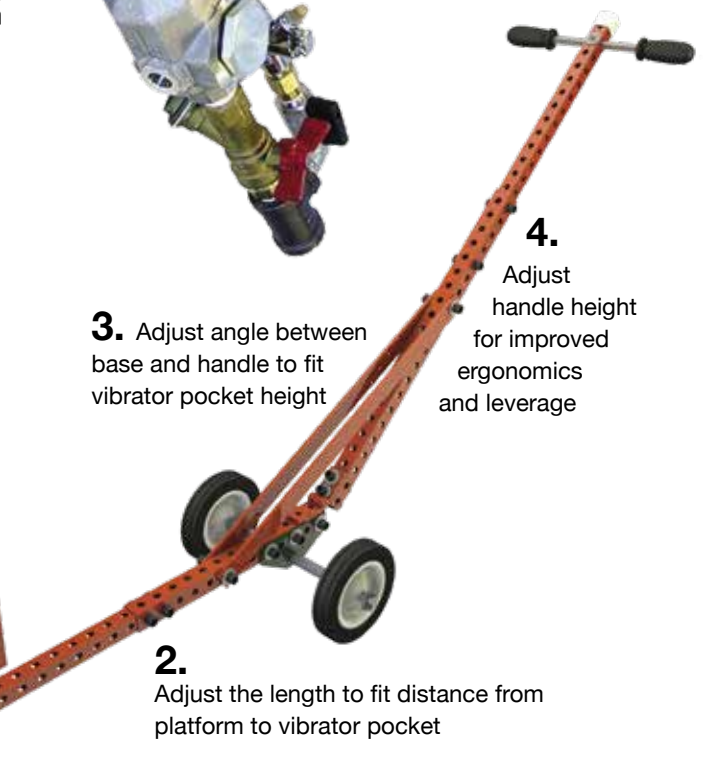
3. Adjust angle between base and handle to fit vibrator pocket height

2. Adjust the length to fit distance from platform to vibrator pocket

4. Adjust handle height for improved ergonomics and leverage



**RB-6500-SVR &
RB-5000-CCW
with the latest
in technology**





MOUNTING SYSTEMS

STIK-IT™ VACUUM MOUNT

Shown with Pneumatic
SVRFS-4000 AL unit
with Stik-It™ WALL

- Rapidly Attaches to Surfaces
- No Bolting or Welding
- Provides "One Person Portability"
- Great for Testing and Cleaning
- Extreme Temp (ET) Models Available (see below for temp. range)

VIBCO's Stik-It™ pneumatic vibrator mount is the versatile, weld free vibrator mounting solution you need! It mounts to any smooth nonporous surface in seconds. No bolts, no welding, no hassle. Just the right amount of vibration right where you need it... right away.

VIBCO's exclusive Stik-It™ mount creates positive suction with a steady air miser. Place, remove and reuse your VIBCO vibrators in seconds!

VIBCO Stik-It™ mounts can be used with over 40 of VIBCO's pneumatic, electric and hydraulic vibrators. Just ask a VIBCO Engineer to recommend the right vibrator and mount.

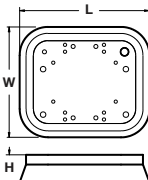
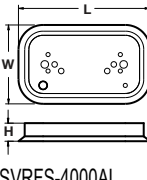
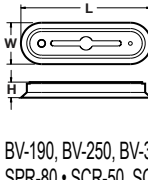
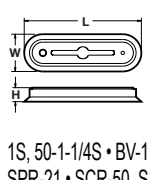
Tried other models that failed? VIBCO's Stik-It™ mount was designed just for the harsh dusty industrial environment. Our vacuum producer will pass large dust particles that will kill other units! Plastic tote bins, IBCs, test labs, rail cars, fiber drums, V cone blenders, temporary material flow problem spots, hopper clean outs... all are perfect places to Stik-It™!



Which VIBCO Vibrator model do you plan to use?

Find your vibrator in the boxes below to see which Stik-It™ mount is compatible.

If your Vibrator model is not listed, call a VIBCO Application Engineer to help you make the right selection, 401-539-2392.

STKIT-908*	STKIT-906*	STKIT-903*	STKIT-902*
 <p>Compatible with: VS-510 • SCR-300, SCR-400 • 2P-75, 2P-100, 2P-150 • 50-2S</p>	 <p>Compatible with: VS-380 • V-380 • 50-1-1/2S-VC • US-450T, US-700 • SVRFS-4000AL</p>	 <p>Compatible with: MLT-190, MLT-250, MLT-320 • BVS-130, BVS-160, BVS-190, BVS-250, BVS-320 • V-130, V-190, V-250, V-320 • VS-130, VS-160, VS-190, VS-250, VS-320 • 50-1S, 50-1-1/4S • BV-130, BV-190, BV-250, BV-320 • SPR-20, SPR-21, SPR-40, SPR-60, SPR-80 • SCR-50, SCR-100 • SPRT-21, SPRT-60, SPRT-80</p>	 <p>Compatible with: MLT-190 • BVS-130, BVS-160, BVS-190 • V-130, V-190 • VS-130, VS-160, VS-190 • 50-1S, 50-1-1/4S • BV-130, BV-190 • SPR-20, SPR-21 • SCR-50, SCR-100 • SPRT-21</p>

Dimensions - Other sizes available. Consult Factory for further information. *Vibrators sold separately

Model	L = Length		W = Width		H = Height		Inlet
	inch	mm	inch	mm	inch	mm	NPT
STKIT-902 & STKIT-902ET	8	203.2	3	76.2	1-3/8	34.9	1/4
STKIT-903 & STKIT-903ET	11	279.4	3-1/2	88.9	1-3/8	34.9	3/8
STKIT-906 & STKIT-906ET	10	254.0	6	152.4	1-3/8	34.9	3/8
STKIT-906WALL & STKIT-906WALLET	10	254.0	6	152.4	1-3/8	34.9	3/8
STKIT-908 & STKIT-908ET	10	254.0	8-1/2	215.9	2-1/8	53.9	3/8

Technical Data

Model No.	psi	bar	CFM	Std. Temp. Range		Extreme Temp. Range		Weight	
				°F	°C	°F	°C	lbs	kg.
STKIT-902 & STKIT-902ET	80	5.5	8	32°F to 125°F	0°C to 51°C	-40° to 450°F	-40° to 232°C	0.8	0.4
STKIT-903 & STKIT-903ET	80	5.5	8	32°F to 125°F	0°C to 51°C	-40° to 450°F	-40° to 232°C	1.6	0.7
STKIT-906 & STKIT-906ET	80	5.5	8	32°F to 125°F	0°C to 51°C	-40° to 450°F	-40° to 232°C	3.3	1.5
STKIT-906WALL & STKIT-906WALLET	80	5.5	8	32°F to 125°F	0°C to 51°C	-40° to 450°F	-40° to 232°C	3.3	1.5
STKIT-908 & STKIT-908ET	80	5.5	8	32°F to 125°F	0°C to 51°C	-40° to 450°F	-40° to 232°C	4.4	2.0

STD temp. range uses blue neoprene base, Extreme temp. range uses black silicone base • NOTE: Material, Dimensions & Data subject to change without notice • Dimensions ±1/16"

MOUNTING SYSTEMS

TRAILA™ VIBRATOR MOUNT



- Easily moves from hopper to hopper
- Securely attaches to hoppers on grain trailers and more
- High Temp Units Available
- Powerful yet Lightweight

Experience the ultimate solution for weight-saving and effortless unloading with the innovative Traila™ unit. Designed to simplify your truck and tender hopper unloading process, Traila™ boasts a hassle-free experience like never before. Switching between hoppers is a breeze with Traila™ thanks to its suction-activated base, eliminating the need for bolts, welding, or any unnecessary complications. Its powerful suction even works wonders on plastic tote bins, fiber drums, and other non-porous surfaces.

Say goodbye to cumbersome setups! VIBCO's specialized air fitting seamlessly connects to your truck's compression system. With just an air hose, you can effortlessly switch between bins. Activate the suction with a straightforward switch and



TRAILA
STIK-IT™

start the vibration with another, allowing you to take control effortlessly. The Traila™ has been thoughtfully redesigned for reduced weight and improved versatility, ensuring the right force and frequency to handle even your toughest loads. Experience unparalleled efficiency with Traila™ and revolutionize your unloading process today.

STKIT-901GP

- For columns with a tight radius

The STKIT-901GP can be easily moved from column to column as needed. The neoprene suction base is paired with

a strong, specialized MLT-190 which is ideal for small diameter columns and curved surfaces with its small footprint. VIBCO engineers are happy to suggest the perfect STIK-IT for your needs. We have versions to handle small areas as well as railroad cars.

Dimensions

Model	L		W		H		C		D		I	J	K	
	in.	mm	in.	mm	in.	mm	in.	mm	in.	mm	NPT	NPT	in.	mm
TRALA-STKIT150	10	254	6	152	8-7/16	214	1-3/8	35	5/16	8	1/4	3/8	2-1/2	64
TRALA-STKIT200	10	254	8-1/2	216	9-5/16	237	2-1/8	54	1/4	6	1/4	3/8	3	76
STKIT-901GP	6	152	3-5/16	84	5-1/4	133	1	25	2	51	1/4	1/2	—	—

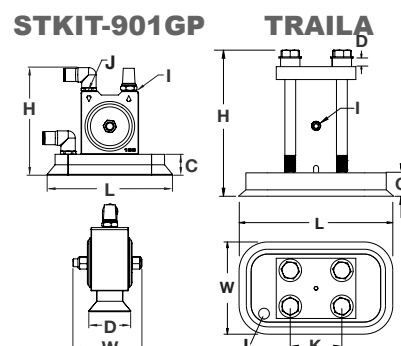
NOTE: • Material, Dimensions & Data subject to change without notice • Dimensions ±1/16"

Technical Data

Model	Weight		60 PSI (4 Bar)		80 PSI (5.5 Bar)		Max. Weight* of Material in Bin Slope Area			
			Cubic ft./min.	Vibration/min.	Cubic ft./min.	Vibration/min.				
	lbs.	kg.	CFM	VPM	CFM	VPM	min. lbs.	max. lbs.	min. kg.	max. kg.
TRALA-STKIT150	14.9	6.7	9	2,400	11	3,200	400	1,000	180	455
TRALA-STKIT200	21.4	9.6	12	2,400	15	3,000	1,000	4,000	455	1,815
STKIT-901GP	4.1	1.9	7.5	7,000	8.5	7,200	—	2,700	—	1225

* Rule of thumb for sizing:
One lb. vibrator force to each
10 lbs. of bin content at 80 PSI

NOTE: • Data obtained on laboratory test block
• Frequency and force will vary with quality of air, unit lubrication, and rigidity of mount
• Material, Dimensions & Data subject to change without notice



MOUNTING SYSTEMS STIK-IT MAX

Shown with SVRFS-4000AL but MAX works with many other vibrators using its adjustable plate. Consult Factory for Custom Solutions

- **Versatile, Works with many VIBCO Units on any flat smooth surface.**
- **Increased Cup Life - Vibrations through Unit, not Cup.**
- **Patented Design offers Significantly Increased Force Transfer**



Say goodbye to frequent cup replacements! Experience the difference with our innovative technology that directs vibrations through the Unit, not the Cup. This breakthrough design ensures an extended cup life, saving you valuable time and resources.

Are you ready to conquer the most demanding challenges? When the job calls for heightened force and amplitude, our VIBCO Stik-It MAX rises to the occasion. It's engineered for excellence, designed for durability, and destined to excel in even the toughest environments.

Introducing the Ultimate VIBCO Accessory for Unrivalled Performance, Stik-it MAX! Engineered to seamlessly work with most VIBCO Units MAX will enhance your industrial operations or tackle demanding applications in AG, Transportation, and Concrete. Our patented design is an adaptable solution which is here to revolutionize the way you work.

Upgrade your equipment and elevate your success. Experience the future of force transfer – order your VIBCO Stik-It MAX today and embrace the possibilities it brings to your applications. **Unleash the power, amplify the results – with VIBCO!**

Dimensions

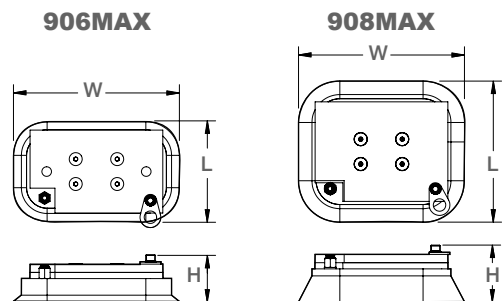
Model	L		W		H	
	in.	mm	in.	mm	in.	mm
906MAX	6	152.4	10	254	2.5	63.5
908MAX	8.5	215.9	10	254	3.25	82.55

NOTE: • Material, Dimensions & Data subject to change without notice • Dimensions $\pm 1/16"$

Technical Data

Model No.	psi	bar	CFM	Std. Temp. Range		Weight*	
				°F	°C	lbs	kg.
906MAX	80	5.5	8	32°F to 125°F	0°C to 51°C	6.5	2.948
908MAX	80	5.5	8	32°F to 125°F	0°C to 51°C	7.85	3.561

STD temp. range uses blue neoprene base, Extreme temp. range uses black silicone base • NOTE: Material, Dimensions & Data subject to change without notice • Dimensions $\pm 1/16"$
* The Weight shown does not include the weight of the actual vibrator which may change to meet your needs.



MOUNTING

VIBCO MOUNTING SYSTEMS PREFABRICATED CONVENIENCE!

Follow the installation instructions for outstanding results with VIBCO's pre-fabricated systems.

1. Best Transfer of Vibration!

Experience the ultimate transfer of vibration with VIBCO's Pre-mounted systems, ensuring optimal distribution for maximum effect.

2. Protect your equipment from damage due to wrongly mounted vibration solutions

Worried about equipment damage from incorrectly mounted solutions? Put your concerns to rest with VIBCO mounting systems. Designed to work seamlessly with our vibrators, they guarantee a safe transfer of necessary vibration, preventing any potential damage or cracks in bins. Avoid disaster by steering clear of inferior products that could spell trouble!

3. Systems Available for all Vibrator Styles

Our range of mounting systems covers every Vibrator Style imaginable. From wall forms, pipes, and concrete trucks to railroad cars, dump bodies, and bins, we have you covered. Discover our innovative Stik-it™ system, specially designed for non-porous surfaces (see page 61).

4. Convenient / Easy to Mount

Our Pre-Fabricated Mounting Systems take the guess work out of mounting the correct equipment in the correct fashion. Easy to follow directions or our VVV (Virtual Van Visit) give you a simple 1, 2, 3 step instructions to install.



5. Brackets allow vibrator portability

Achieve unparalleled flexibility with our brackets, allowing you to install multiple permanent or portable options. Tailor the placement of vibrators precisely to your project requirements, maximizing efficiency and effectiveness. Concrete molds, wall and foundation pouring, railroad car loading and unloading, bins, and hoppers all benefit from vibration to improve material flow.



Looking for portability? Be sure to check out our latest units featuring cutting-edge brackets. They utilize standard air pressure to create powerful suction, making your job even easier.



VIBCO PIPE BRACKETS

ENGINEERED SYSTEMS THAT WORK!



USE VIBCO MOUNTING SOLUTIONS FOR BEST FORCE TRANSFER

We believe in giving you choices and options to meet your needs! We offer a complete line of mounting hardware and brackets to suit any mounting configuration for a wide variety of industrial and construction vibrator applications including: pipe mounting and other

brackets, clamp blocks, railroad car shaker wedge brackets and clamp-on brackets, adapter plates, and concrete form brackets. VIBCO's Easy Mounting System is perfect for most industrial vibrator installations. Contact a VIBCO application engineer to discuss the best mounting solution for you. (For pipe brackets, please specify pipe diameter with order!)



MOUNTING

WALL FORM BRACKETS

FOR ALL FORM TYPES & BRANDS


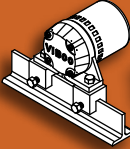
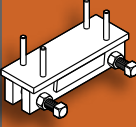
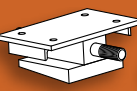
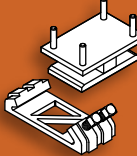
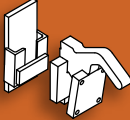
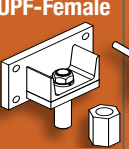
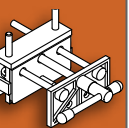


Discover the ideal wall form bracket for your construction needs with VIBCO's outstanding selection. Our standard VIBCO models are expertly crafted to ensure optimal performance with both individual manufactured form types and wooden forms. But that's not all - we go the extra mile to empower you in your construction journey!

Imagine creating your very own customized wall bracket - a perfect fit for your unique requirements. With VIBCO's support and collaboration with our application engineers, the possibilities are endless.

Picture the vibration waves emanating powerfully from the vibrator and gently diminishing in a circular pattern, akin to the mesmerizing ripples created by a stone tossed into water. Our brackets ensure a remarkable effective vibration area, typically within a 3-foot radius from the vibrator. But wait, there's more! Some of the vibration can travel up to a 5-foot radius, where the next vibrator's effect conveniently overlaps, ensuring seamless coverage. Our experienced engineers are readily available to lend their expertise.

VIBCO MOUNTING BRACKETS

BRACKETS FOR STANDARD MODELS		Mounting Bracket	Clamp Block	Car Shaker & Form Bracket	Car Shaker Wedge Bracket	Form & Bin SB Shoe Bracket	Wedge Type Form Bracket	Pin Form Bracket UPF-Female	Wooden Form Bracket
				 Clamp-On			 UWF-Female		
Female bracket weight		—	—	Channel bracket: lg. 28.15/sm14.3 lbs	25 lbs.	7.7 lbs.	UWF-3: 5.6 lbs. UWF-1: 3.7 lbs.	2 lbs.	—
2P-75		VMM-11 (2)	—	VMC-81 (17)	—	—	VMT-11 (15)	—	—
2P-100		VMM-111 (2)	—	VMC-82 (17)	—	—	VMT-1 (15)	—	—
2P-150		VMM-12 (7)	—	VMC-83 (22)	—	—	VMT-12 (19)	—	—
2P-200, 4P-350		VMM-2 (7)	—	VMC-2 (36)	VMW-2 (27)	VMH-2 (15)	VMT-2 (19)	—	VMF-2 (14)
4P-700 & 1000, 6P-300 & 500		VMM-4 (11)	—	VMC-4 (39)	VMW-4 (31)	VMH-4 (18)	VMT-4 (23)	—	VMF-4 (18)
2P-450,	1 ph	VMM-4 (11)	—	VMC-4 (39)	VMW-4 (31)	VMH-4 (18)	VMT-4 (23)	—	VMF-4 (18)
	3 ph	VMM-3 (11)	—	VMC-3 (39)	VMW-3 (31)	VMH-3 (18)	VMT-3 (23)	—	VMF-3 (18)
2P-800	1 ph	VMM-61 (21)	—	VMC-61 (49)	VMW-61 (41)	VMH-61 (28)	—	—	—
	3 ph	VMM-5 (21)	—	VMC-5 (49)	VMW-5 (41)	VMH-5 (28)	—	—	—
2P-1700		VMM-6 (21)	—	VMC-6 (40)	—	—	—	—	—
4P-1400		VMM-6 (21)	—	VMC-6 (40)	—	—	—	—	—
2P-2500, 2P-3500 & 4500		VMM-7 (21)	—	VMC-7 (41)	—	—	—	—	—
4P-2000		VMM-6 (21)	—	VMC-6 (40)	—	—	—	—	—
6P-1000		VMM-6 (21)	—	VMC-6 (40)	—	—	—	—	—
8P-500		VMM-6 (21)	—	VMC-6 (40)	—	—	—	—	—
2P-5500, 4P-3000 & 5000		VMM-8 (51)	—	—	—	—	—	—	—
6P-1500 & 2500		VMM-8 (51)	—	—	—	—	—	—	—
8P-750, 8P-1200		VMM-8 (51)	—	—	—	—	—	—	—
SPR, SPRT-20, -21 SPR, SPRT-40, -60 & -80	SPM-1 (2)	SPM-1 (2)	C-2 (3)	—	—	—	—	—	—
	SPM-2 (3)	SPM-2 (3)	C-2 (3)	—	—	—	—	—	—
SPWT		SPWM (3)	—	SPWC (8)	—	—	—	—	—
SCR-100, US-100, DC-100		UM-1 (2)	C-2 (3)	—	—	—	—	—	—
SCR-200, US-450, DC-450		UM-2 (4)	C-4 (4)	UC-3 (15)	—	UA-1 (11)	UW-4 (16)	UW-1 (5)	USF-1 (11)
US-700, DC-700		UM-7 (2)	C-4 (4)	UC-4 (15)	—	—	UW-5 (14)	—	USF-4 (9)
SCR-500		SCRM-2 (8)	—	SCRC-2 (20)	SCRW-2 (28)	SCRA-2 (15)	—	—	SCRF-2 (16)
SCR-1000		SCRM-1 (8)	—	SCRC-1 (20)	SCRW-1 (28)	SCRA-1 (15)	—	—	SCRF-1 (16)
SFC MODELS		SFCM (4)	—	—	—	SFCH (11)	—	—	—
FC MODELS		FCM-1 (5)	—	FBB-1 (15)	—	FCH-1 (12)	—	—	—
US-900, DC-900		UM-3 (6)	—	UC-1 (15)	—	UA-2 (13)	UW-2 (18)	—	USF-2 (13)
US-1600, DC-1600		UC-4 (6)	—	UC-2 (16)	—	UA-3 (13)	UW-3 (18)	—	USF-3 (13)
BB, BBS, FBS MODELS		—	C-1 (3)	—	—	—	—	—	—
B-130, BV-130, BVS-130		BVM-1 (2)	C-2 (3)	—	—	—	—	—	—
B, BV, BVS-160 & 190		BVM-2 (2)	C-2 (3)	—	—	—	—	—	—
B-250, BV-250, BVS-250		BVM-3 (2)	C-2 (3)	—	—	—	—	BVP-5 (5)	—
B-320, BV-320, BVS-320		BVM-4 (2)	C-3 (3)	—	—	BVH-4 (9)	BVT-4 (14)	BVP-4 (5)	BVF-4 (9)
BV-380, BVS-380		BVM-5 (4)	C-4 (4)	—	—	BVH-3 (11)	BVT-3 (16)	BVP-3 (5)	BVF-3 (11)
BVS-510		BVM-6 (6)	C-4 (4)	BVC-3 (15)	—	BVH-2 (13)	BVT-2 (18)	BVP-2 (5)	BVF-2 (13)
BVS-510F		BVM-61 (6)	—	BVC-2 (15)	—	BVH-21 (13)	BVT-21 (18)	BVP-21 (5)	BVF-21 (13)
BVS-570, BVST-4400		BVM-7 (7)	—	BVC-1 (15)	BVW-1 (27)	BVH-1 (14)	BVT-1 (19)	—	CCFF-3 (15)
V-130, VS-130		VSM-1 (2)	C-2 (3)	—	—	—	—	—	—
V, VS-160 & 190		VSM-2 (2)	C-2 (3)	—	—	—	VST-3 (15)	VSP-3 (5)	VSF-4 (9)
V-250, VS-250		VSM-3 (4)	C-2 (3)	—	—	VH-1 (11)	VST-2 (17)	VSP-2 (5)	VSF-2 (12)
V-320, VS-320		VSM-3 (4)	C-3 (3)	—	—	VH-1 (11)	VST-2 (17)	VSP-1 (5)	VSF-2 (12)
V-380, VS-380		VSM-4 (4)	—	VC-3 (15)	VSW-1 (25)	VH-2 (11)	VST-1 (17)	—	VSF-1 (12)
VS-510		VSM-5 (4)	—	VC-1 (15)	—	VH-3 (11)	VST-4 (17)	—	VSF-3 (12)
SVRFS-2000 & -4000, CCF-2000		CCM-3 (3)	—	CCFC-3 (31)	CCFW-3 (24)	CCFH-3 (10)	CCW-2 (16)	—	CCFF-1
CCF-5000		CCM-2 (7)	—	CCFC-1 (35)	CCFW-1 (28)	CCFH-1 (14)	CCW-3 (20)	—	—
CCL-5000		—	—	CCFC-2 (29)	CCFW-2 (22)	CCFH-2 (15)	—	—	—
SVR-4000		SVM-1 (6)	—	SVC-1 (34)	SVW-1 (27)	SVA-1 (13)	SVH-1 (18)	SVP-1 (5)	SVF-1 (13)
SVR-5500		—	—	SVC-2	SVW-2 (22)	—	SVH-2	—	—
SVRF-5500		SVM-2 (8)	—	SVC-4 (37)	SVW-4 (29)	—	—	—	—
SVRL, SVRLS-5500, 6500 & 8000		—	—	CCFC-2 (29)	CCFW-2 (22)	CCFH-2 (15)	—	—	—
SVR-8000		SVM-3 (9)	—	SVC-3 (38)	SVW-3 (29)	—	—	—	—
HLF-1750 & -2500, PLF-1750 & -3500, PF, HF-800, -1200 & -1500		PFM-1 (9)	—	PFC-1 (38)	PFW-1 (29)	PFA-1 (16)	—	—	—
PF, HF-3500		PFM-2 (11)	—	PFC-2 (40)	PFW-2 (31)	PFA-2 (18)	—	—	—



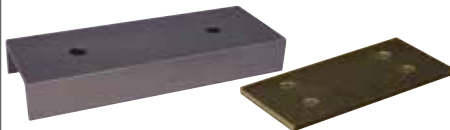
VIBCO ENGINEERS
will design special
brackets for your
applications

() weight in lbs. NOTE: Material, Dimensions & Data subject to change without notice

VIBCO MOUNTING BRACKETS



Mounting Plates, Channels, and Mounting Kits with Channel Irons are available.



The wider UWF-3 Heavy Duty Wedge Bracket is used for stronger forces.



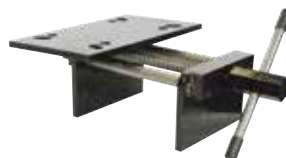
UWF-1 Female Bracket allows multiple hoppers to use one vibrator as needed.



UPF bracket is ideal for precast and other applications. Vibrators can be easily moved.



The VIBCO Form Bracket can be used for wood, plastic, fiberglass, & metal wall forms.



Brackets offer you the flexibility to precisely position the vibrator where it's most needed.

Vibco brackets are renowned for their reliability, ensuring they will efficiently transfer the force and frequency to fulfill their intended purpose better than competitive brackets.



Lug Brackets take the vibration where you want it.
LC-1 LC-2



Rail Road Car Wedge Bracket



Clamp-On Bracket



AIR CANNONS

WITH 2 STYLES OF VALVES

TO MOVE MATERIALS

EXTERNAL VALVE

- No Backlash
- Quiet Operation
- Clog-Free Valve
- Low Maintenance
- Safe External Servicing with easy cartridge replacement!
- ASME Coded Vessel

Ask for
Catalog 9131
Air Cannons

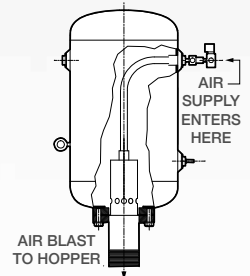


INTERNAL VALVE

- Only one moving part
- Kit complete with 90° elbow, flanges, bolts,
- Safe
- Quiet

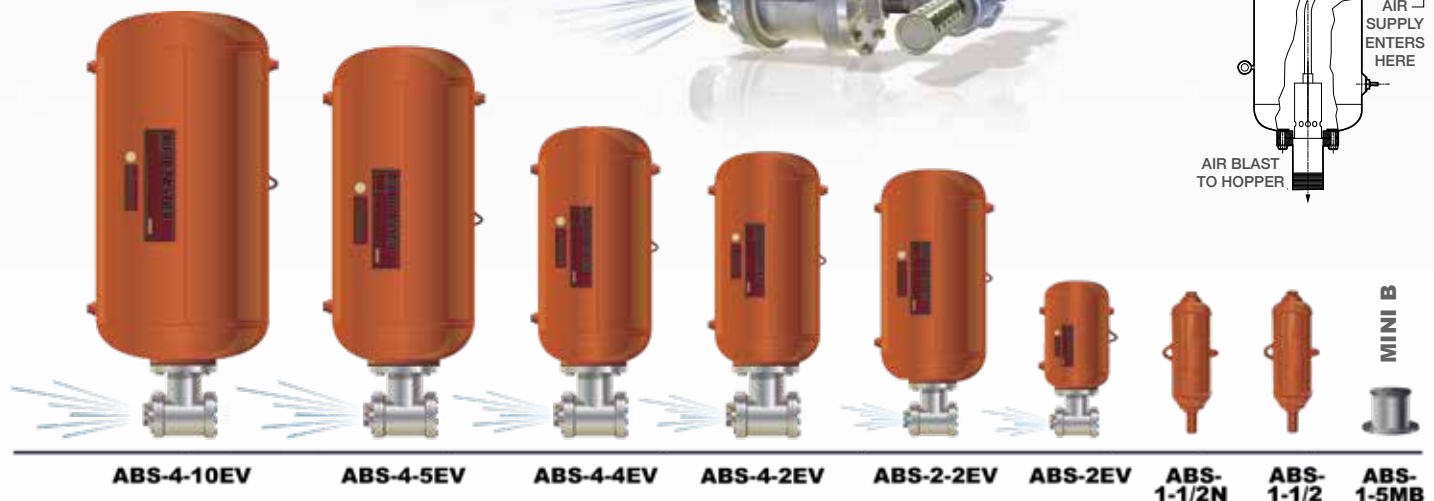


STANDARD
INTERNAL VALVE



AIR CANNON SIZE COMPARISON FROM 52.5" TO 5.5"

SHOWN WITH EXTERNAL VALVE



Dimensions

MODEL NO.	DESCRIPTION	HEIGHT		DIAMETER		VOLUME	
		inch	mm	inch	mm	ft. ³	Liters
ABS-1-5MB	VIBCO's Mini B - Smallest industrial Blaster in the world	5-9/16	141	6	152	0.20	0.57
ABS-1-1/2N	Compact, narrow design for use in tight areas.	25	635	6	152	0.20	0.57
ABS-1-1/2	Compatible for the Canadian market	26-7/8	683	5-13/32	137	0.11	3.1
ABS-2EV	<ul style="list-style-type: none"> • Works well for wood, steel and concrete bins • In stock available with same day/next day shipping • All cannons 100% manufactured in the USA • Operates on plant air from 40 to 120 psi • Air Cannons have been made with pride since the '70s • Repair kits are available for older models • Can be used singly or in multiples • Heavy duty construction for durability 	15	381	10	254	0.60	17.0
ABS-2-2EV		24	610	12	305	1.36	39.0
ABS-4-2EV		32	813	12	305	1.36	39.0
ABS-4-4EV		36	914	16	406	3.54	100.0
ABS-4-5EV		48	1,219	16	406	4.35	123.0
ABS-4-10EV		52-1/2	1,334	24	610	9.33	264.0

NOTE: Material, Dimensions & Data subject to change without notice • Dimensions ±1/16"

ABS SERIES WITH PATENTED DOUBLE PISTON VALVE

Select the Ideal VIBCO Air Cannon with 2 Effective Methods!

METHOD 1: Bin Size Consideration

Choosing the right VIBCO Air Cannon is made easy by considering the size of your bin. Follow these guidelines:

- For bins with a diameter or side measuring **2 to 6 feet**, opt for ABS-1-1/2.
- Bins with a diameter of **6 to 10 feet** are best served by ABS-2EV or ABS-2-2EV.
- If your bin falls within the **10 to 15 feet** diameter range, go for ABS 4-2EV, with one unit required for every 13-15 feet of circumference or perimeter.
- For larger bins, between **16 to 20 feet** in diameter, choose either ABS-4-4EV or ABS-4-5EV, with one unit for every 20-25 feet of circumference or perimeter.
- For even bigger bins ranging from **21 to 26 feet** in diameter, consider ABS 4-10EV, with one unit for every 25-30 feet of circumference or perimeter.

METHOD 2: Dealing with Tough Materials & Odd Shaped Bins

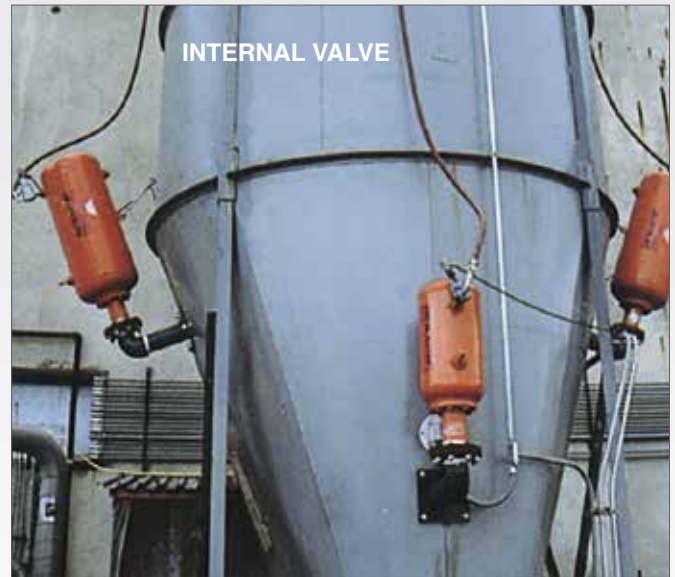
For handling challenging materials and oddly shaped bins, the following method comes to the rescue:

1. Identify the **material hang-up area** (the region where materials tend to stick).
2. Determine whether you are dealing with **Material Type A** or **Material Type B**.

MATERIAL TYPE A	MATERIAL TYPE B
Large chunks, high moisture content; clings to walls; will set up or harden when stored; weight in excess of 65-70 lbs. per cu. ft., or slope angles less than 30° with small discharge openings.	Dry, powdery, stringy or spongy, with material weight less than 60 lbs. per cu. ft., slope angles more than 45° and large discharge openings.

Now, refer to the appropriate column for your material type (Material A or Material B) and **find the blast area you need below**. Proceed to lay out the area of influence within the region to be blasted, ensuring that the areas of influence overlap in critical regions.

With these two methods, selecting the perfect VIBCO Air Cannon becomes a breeze, allowing you to optimize your operations and improve material flow efficiently.



AIR CANNON

Technical Data - Blast Area

MODEL NO.	FREE AIR 80 PSI per Ft. ³ (L)	TEMP. RANGE °F (°C)		DISCHARGE SIZE NPT	MATERIAL A BLAST SPAN L' x D' (mm x mm)	MATERIAL B BLAST SPAN L' x D' (MM x MM)	MOUNTING KIT
		Standard	High Temp.				
ABS-1-5MB	0.1 (2.8)	200°F (93°C)	340°F (170°C)	1-1/4 NPT	2' x 1' (610 x 305)	2' x 2' (610 x 610)	MBM-1
ABS-1-1/2	.6 (17)	200°F (93°C)	340°F (170°C)	1-1/4 NPT	3' x 1' (915 x 305)	4' x 2' (1,220 x 610)	MBM-1-1/2ABS
ABS-2EV	3.3 (92)	200°F (93°C)	340°F (170°C)	2 NPT	4' x 2' (1,220 x 610)	7' x 3' (2,135 x 915)	MK2ABSEV
ABS-2-2EV	7.4 (210)	200°F (93°C)	340°F (170°C)	2 NPT	5' x 3' (1,525 x 915)	8' x 4' (2,440 x 1,220)	MK2ABS-2EV
ABS-4-2EV	7.4 (210)	200°F (93°C)	340°F (170°C)	4 NPT	6' x 4' (1,830 x 1,220)	9' x 5' (2,745 x 1,525)	MK4ABS-2EVM
ABS-4-4EV	19.2 (544)	200°F (93°C)	340°F (170°C)	4 NPT	7' x 4' (2,155 x 1,220)	10' x 5' (3,050 x 1,525)	MK4ABS-5EV
ABS-4-5EV	23.7 (670)	200°F (93°C)	340°F (170°C)	4 NPT	7' x 5' (2,135 x 1,525)	10' x 6' (3,050 x 1,830)	MK4ABS-5EV
ABS-4-10EV	50.8 (1438)	200°F (93°C)	340°F (170°C)	4 NPT	8' x 6' (2,440 x 1,830)	12' x 7' (3,660 x 2,135)	MK4ABS-10EV

VIBRATION TABLES TESTING & GRID TOP



**TEST
TABLE
USTT**
18", 24",
30" & 36"

**MADE
TO YOUR
SPECS**



**TEST
TABLE**

ANY SHAPE FOR ANY PURPOSE

Discover a World of Possibilities with VIBCO Vibrators! Our versatile and reliable vibration tables are custom-built to cater to all your industrial and construction needs. Whether it's settling materials for shipping or consolidating concrete, we have the perfect Vibrating Table solution just for you!

WHY CHOOSE VIBCO VIBRATORS?

Swift Delivery: Say goodbye to long waits! Our US-TT and US-RD vibrating tables ship within 7-10 business days, unlike our competitors' 4-6 week lead times. Get the vibrating tables you want, precisely when you need them.

Tailored Solutions: We understand that one size doesn't fit all. That's why we offer custom-designed tables to meet your specific requirements. Our designs utilize strong yet lightweight rectangular tubing, ensuring optimal vibration transfer to the load.

TEST TABLES FOR ULTIMATE PRECISION & EFFICIENCY

- Simulate Handling & Transportation Shocks
- Ensure Safe Handling with No Harm to Sensitive Circuits
- Remove Dangerous Residue for a Cleaner Environment
- Detect Marginal Connections with Inexpensive Full Range Control
- Verify Integrity of Electric Circuits & Complete Chassis
- Stop Costly Field Service Calls with Reliable Testing

Our exclusive patented live top table design guarantees uniform vibration throughout the table top, ensuring consistency and reliability in testing. Choose from a wide range of variable and consistent frequency equipment, delivering low-cost and dependable product reliability testing. Check out our standard 24" x 24" x 36" high table or request a special table tailored to your unique needs. For more information, ask for VIBCO's complete test table brochure.

EXPLORE GRID TOP TABLES

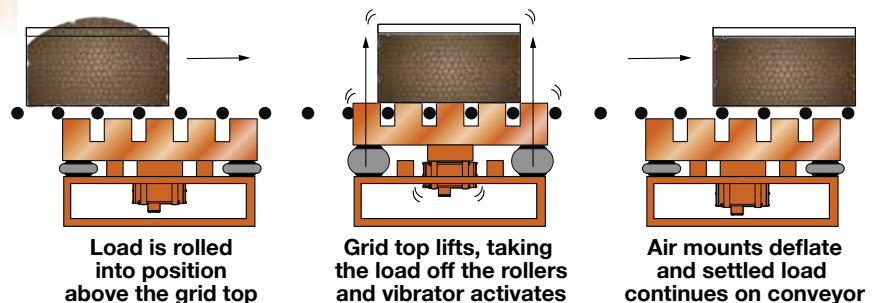
- Adapt to Any Roller Conveyor with Ease
- Robust Design for Maximum Efficiency
- Enjoy Automatic Operation for Seamless Performance

VIBCO's Grid Top Tables are the answer to your filling, packing, and weighing challenges. Our standard Grid Top Table features vibrators underneath, but we offer various solutions for weigh scale applications and vibrator placement to suit your preferences.

Our Grid Top Table is ingeniously designed to fit between your conveyor's rollers. Simply roll the load, foundry flask, drum, or box into position. Air mounts lift the grid top, taking the load off the rollers, while the vibrators go to work. Once the vibration process is complete, the air mounts deflate, and the load is back on the conveyor, ready to move along – all in a matter of seconds, without any manual handling required. See the process in the illustration below. VIBCO Vibrators. Experience efficiency, precision, and durability all in one place. Get in touch with us now!



**GRID TOP TABLES
(above & below)**
Heavy duty steel tube
and frame construction



VIBRATION TABLES FOR COMPACTION, PACKING & MORE

COMPACTION TABLES

VIBCO's range of innovative compaction tables are designed to meet the most demanding needs in material handling and processing. Our products are built to be heavy duty, versatile, and easily customizable to your specific requirements.

- **Heavy Duty Construction:** Our compaction tables are engineered to withstand maximum loads, ensuring long lasting performance under challenging conditions.
- **Speed and Force Adjustable:** Fine tune the vibration speed and force to precisely match your application, achieving optimal compaction results every time.
- **Work with a variety of Vibrators:** Versatility at its finest! Our tables can be equipped with either pneumatic, hydraulic or electric vibrators to suit your preferences and needs.
- **Vibration Isolation:** Say goodbye to unwanted vibrations! Our tables incorporate inflatable air mounts, rubber mounts, or springs to isolate vibrations from the frame, providing a stable and controlled environment.

Applications include: Packing & Settling, Concrete Casting, Fatigue Testing

FLAT PLATFORM TABLES:

- **Low Profile Design:** With a working surface as low as 2 inches from the floor, our flat platform tables eliminate vibration transfer to the floor, providing a stable foundation.
- **Space and Cost Savings:** By packing more material per given volume, our low profile tables help save valuable space and reduce transportation expenses.

Applications: Ideal for Filling Machines, Low-profile design.

LOW PROFILE PACKER:

- **Adjustable Brackets:** Our low-profile packer accommodates drums or boxes of different sizes, providing versatility in handling various materials.
- **Heavy Steel Top:** The durable steel top ensures a long-lasting surface, capable of withstanding constant use and heavy loads.
- **Safe and Efficient Operation:** Designed to remove dangerous residue and prevent vibration transfer, providing safer, more productive workspaces.
- **Easy to Use:** When equipped with a VIBCO vibrator, this packer may offer adjustable speed and force for handling a wide range of materials.
- **Secured to the Floor:** Built with runners to firmly secure the packer to the floor, providing stability during operation.

VIBCO is committed to delivering the best compaction solutions tailored to your unique needs. Our team of engineers will work closely with you to design the perfect table that meets your specifications.



COMPACTION TABLE, With High Amplitude Mounts



COMPACTION TABLE

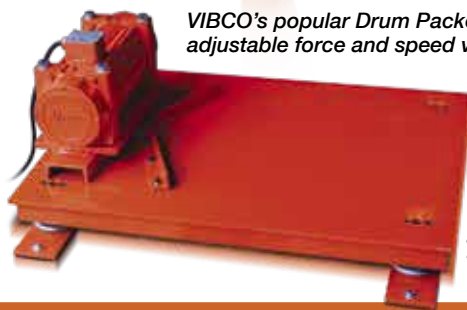
LOW PROFILE COMPACTION TABLE



LOW PROFILE COMPACTION TABLE

LOW PROFILE DRUM PACKER

VIBCO's popular Drum Packer has an adjustable force and speed vibrator to handle a variety of materials. 115 volt makes it easy to move where needed and plugs into any available 115 volt outlet.



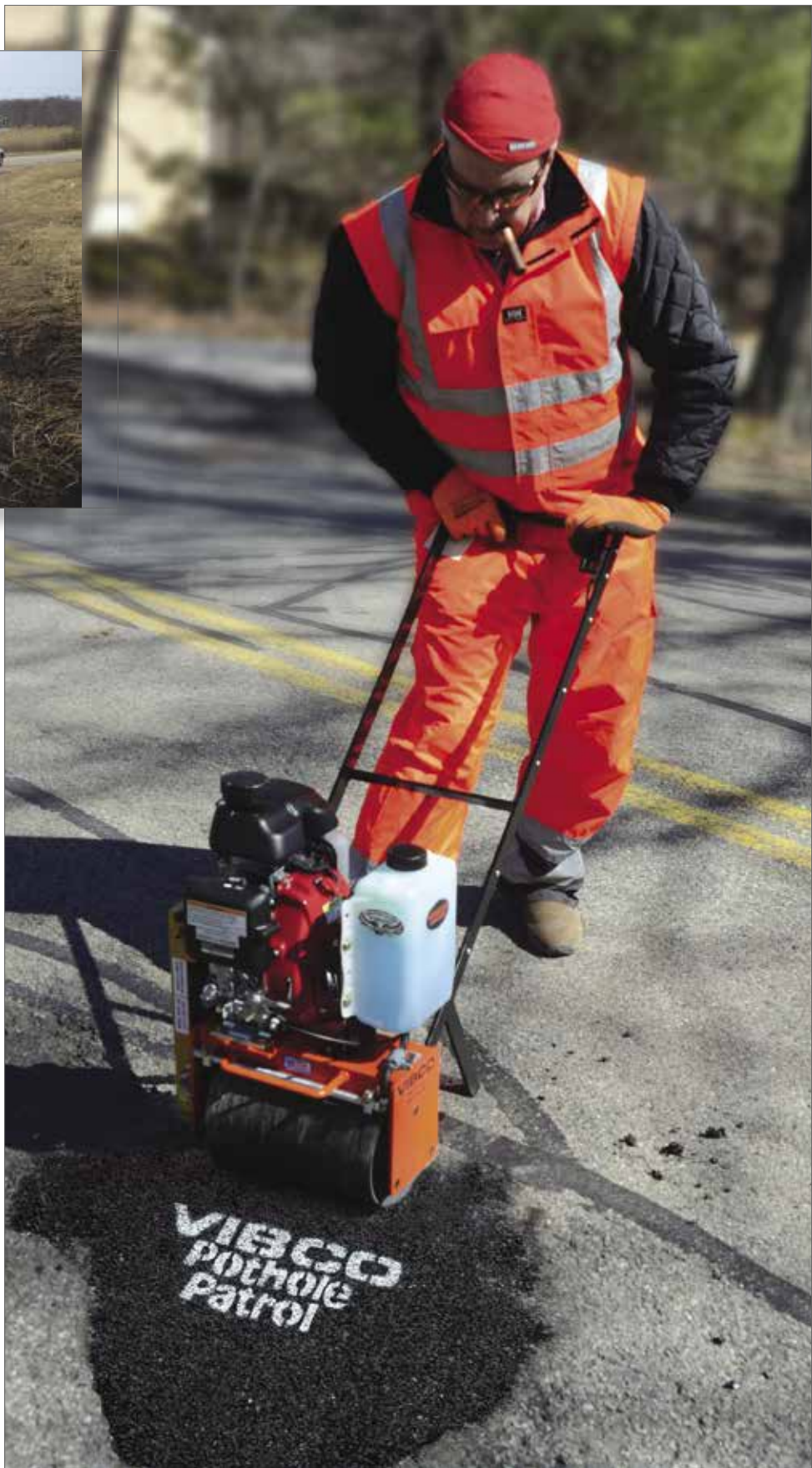
COMPACTION TABLE WITH:
With Explosion-Proof Style Vibrator and Custom Paint.

**MADE
TO YOUR
SPECS**

NOTE: Material, Dimensions & Data subject to change without notice.

VIBCO CONSTRUCTION DIVISION ON THE JOB APPLICATIONS

below: VIBCO CEO, Karl Wadensten, demonstrates the proper use and effectiveness of the GR 1600.



Above: A Model KA, Internal vibrator, with its patented Air-Saver design, gives high frequency, high force performance with the lowest air consumption.

Right & below: Our GR-1600 smoothly rolls the pothole filler material and thoroughly compacts it using vibration.



VIBCO CONSTRUCTION DIVISION

INTERNAL CONCRETE VIBRATORS

High Frequency Electric MODEL JVS, ACE, KAW

- Interchangeable Heads
- JVS Max Head Size 1-3/4"
- ACE Max Head Size 2"
- KAW Max Head Size 2-1/2"
- Heavy Duty Universal Motor
- Interchangeable Flexible Shafts
- Reversible Shafts for Double Life
- Expansion Shafts Available Up to 21 Ft.
- No large inverter box required - Plugs into any 115V socket



Pneumatic MODEL KA

- Maintenance Free
- Only One Moving Part
- 1-3/8" to 6" Head Size
- Patented Wear Plate for Longer Life
- Patented Design • Job Proven for Over 40 Years
- Patented Air Saver Chamber for Lower Air Consumption



Ask for
Catalog
#9606

PLATE COMPACTORS FOR ASPHALT OR SOIL

Forward Operating MODEL TP

- Self Clean Plate
- 1500-4500 lbs. of Force depending on model
- Travels 100-110 ft./min. depending on model
- Available models include TP-10, TP-1220, TP-1830 and TP-2045



Ask for
Catalog #9808

POT-HOLE PACKERS & ROLLERS FOR ASPHALT AND SOIL COMPACTION



GR-3200

- Better uphill traction
- Corrosion-resistant water sprinkler system
- Low-cost compactor for mid-sized jobs
- One year/1000 hour parts & labor warranty



GR-1600

- One Man Operation
- Light 92 lbs
- Water Tank
- 1600 lbs Force
- 8" Compaction



Ask for
Catalog
#9808

NOTE: Material, Dimensions & Data subject to change without notice.

#VIBCO SOLUTIONS

- ▶ **ELECTRIC, PNEUMATIC & HYDRAULIC VIBRATORS**
- ▶ **AIR CANNONS**
- ▶ **RAILROAD CAR SHAKERS**
- ▶ **VIBRATING TABLES**
- ▶ **COMPACTORS & ROLLERS**
- ▶ **ENGINEERED MOUNTING SYSTEMS**



VIBCO®

VIBRATORS

<http://www.VIBCO.com> • vibrators@vibco.com

    #VIBCOsolutions

MADE IN USA 

75 Stilson Road, Wyoming, RI 02898
tel: 401.539.2392 • 800.633.0032

CANADA 

2215 Dunwin Drive, Mississauga, Ont. L5L 1X1
tel: 905.828.4191 • 800.465.9709